

F530



1ST CLASS FLYLOUNGE F530



LET YOUR BOAT ENLARGE YOUR LIFE.

CLASS-LEADING FLYBRIDGE

Enjoy this beautiful, generously sized masterpiece of the F530. It hosts all your guests and can be fitted with all amenities you could wish for.

UNIQUE DINETTE ON THE BOW

On the foredeck there's another cozy dinette for entertaining and alfresco dining – featuring U-shaped seating and atmospheric pop-up lights.

OUTSTANDING HULL DESIGN

Distinctive on the outside, spacious on the inside: behind her stunning visual appearance, the F530 offers 3 cabins for guests and 1 for crew.

OPEN SPACE AND AIRY FEELING

Let the air stream through the inside rooms: a large bi-fold door and a tilting window between rear dinette and saloon will create an open atmosphere on deck.

VERSATILE SEATING AREAS

Turn the main pilot seat into a chaise longue. Convert the U-shaped sofa inside to a double facing one. Make the dinette on the bow a perfect area for sunbathing.

PLENTY OF LIGHT INSIDE

Panoramic windows of 5.8 metres length fill the saloon with natural light. Amid-ships, the recessed hull shape offers views at the sea.





BETWEEN POINT A AND B, THERE IS POINT F: THE FLY.

The flybridge: laid-back dining. Serene sunsets. Cheerful parties. Light-hearted people. No other boat in this category offers more space for pure indulgence beneath the sky. Invite your family to their own luxury terrace overlooking the sea. It is fully equipped with all the amenities to enjoy the elevated position to the most. Time to head out – where, is less important on this yacht.





Entering the flybridge, you have the enviable choice where to enjoy the day first. There is a big U-shaped sofa for up to six people. Laid out with huge sunpads, the area at the windscreen is your preferred place to get a good tan or take a little nap. If you need even more sunbathing space, simply pull out the co-pilot seat.



Naturally, exquisite drinks and fine food are among the great pleasures to experience on the flybridge. Therefore, everything is right at your hand to serve your family's needs.

The wetbar comes with a sink and all the required storage room, optionally with barbecue and icemaker. Your alfresco dining table can be easily enlarged. Beneath the helmseat, there is space for an additional fridge.



The entire Sealine range is born of the same values: each yacht features wide interior spaces, an amazing quantity of natural light and outstanding design with German engineering inside. As for these trademarks, the F530 displays the true spirit of Sealine.



enjoy the
LIGHT

feel the
SPACE

combine functionality with
DESIGN





TAKE YOUR LOFT TO THE SEA.

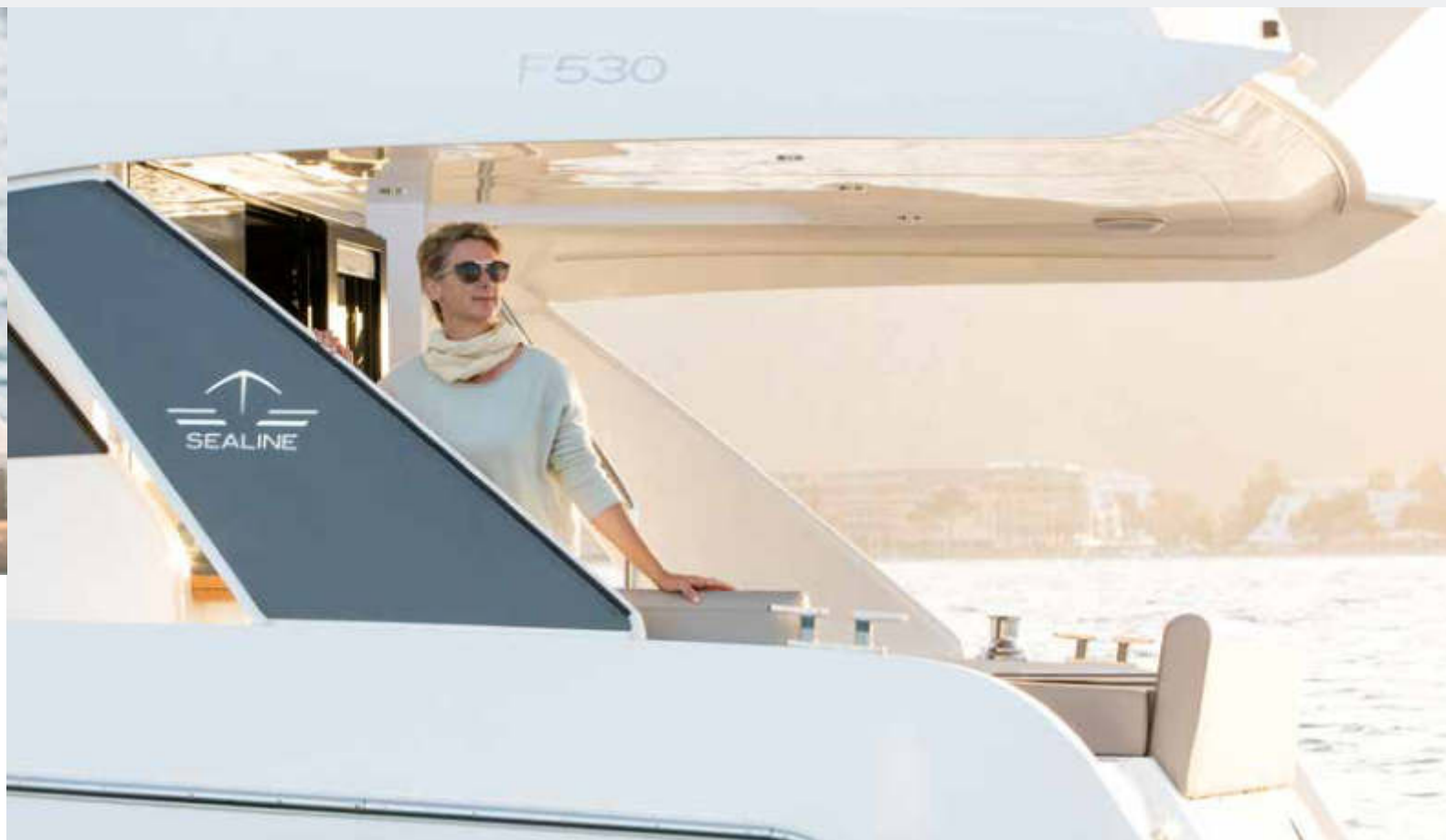
The hull design: endless views. Friendly daylight. Sunny interiors. As a unique highlight of maritime loft architecture, the F530 provides uncovered outlook to the sea from any position! This is achieved by her floor levelled panoramic glass panels, extra large hull windows – and no less than three open-air seating areas that make you feel like cruising on a 60 footer or even larger yacht.



EXTERIOR DESIGN



The rear area is one of three sociable places outside and offers L-shaped seating. Located beneath the flybridge, it has a beautiful ceiling giving you a lot of pleasures: shade during the hottest hours of the day, gentle sounds from its integrated speakers, inviting light from its built-in lamps.





It is a boater's privilege to go swimming wherever you like. With your stunning bathing platform, this privilege turns into pure fun! The hydraulic raise/lower mechanism transforms the platform into a submersable beach. In the lowered position, you get easy and safe access to the water through the embedded ladder with stainless steel handrails.



Offering another great retreat, the cozy foredeck dinette will entertain at any time and can be transformed into a sunbathing area.

After the sun has set, smartly integrated pop-up lights add an idyllic note to the evening ambience. Sit here, and it's hard to imagine yourself anywhere else.





On bright summer days, it is a great joy to blurr the line between inside and out. Open the bifold door and the aft tilting window – and the large saloon flows seamlessly into the rear dining area. As a result, you can use the galley as a bar counter serving the people outside.



TO DISCOVER DREAMY PLACES, STAY ON BOARD.

The interior: loft-style ambience. Luxurious living. Light in abundance. From inside, the F530 offers a unique maritime panorama with 360 degrees view. The floor-to-ceiling windows span 5.8 metres in length. Amidships, the recessed hull enhances their height up to 1.8 metres. So let your family see every bit of the beauty beyond!



INTERIOR DESIGN



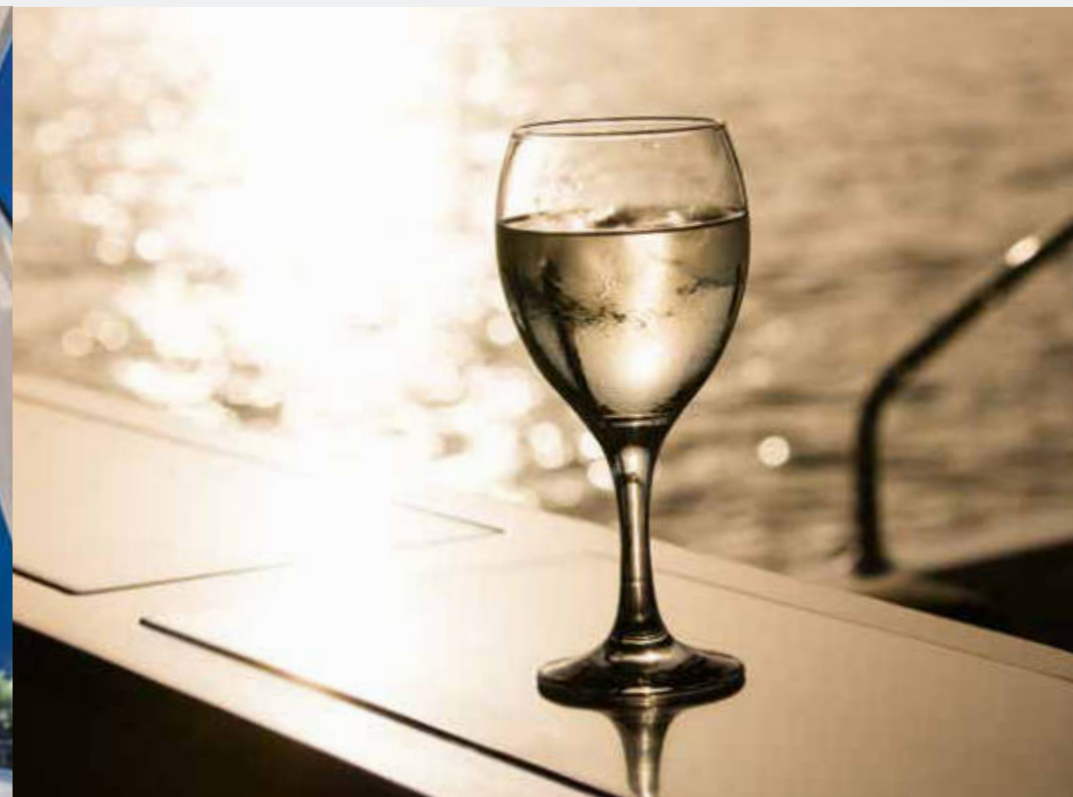
Steering the F530 is an exhilarating excitement: Due to the impressive one-piece-windshield, visibility and brightness to the front are equally great as to the side. Both pilot and co-pilot seats can be converted into a chaise longue facing the saloon. The standard starboard sliding door gives the helmsman direct access to the sidewalk and bow.



The U-shaped galley is thoughtfully located between the saloon and the dinette at the stern to comfortably serve both areas. It features a big fridge and freezer, electric cooking top, a retractable bottle rack and much additional space for individual fittings.

Feel free to have all the appliances installed you like to use at home: wine cooler, big electric oven, microwave with grill, dish washer – there are no limits set for your kitchen equipment on board.





To savour the evening atmosphere, you will find well-positioned lighting throughout the yacht. While berthed in the marina, let yourself be entertained by the retractable 40 inch television visible from any position on deck.

When you feel like retiring to the saloon, simply adjust the seating arrangement to any kind of activity. Change for example the U-shaped layout into two sofas facing each other. The coffee table can be gradually lifted and easily enlarged to the size of a dinner table.





Your luxurious owner's suite can be summed up very easily: exceptional in every way! For maximised dimensions and minimised wave noise, it is positioned amidships. The full beam cabin delights with extra large hull windows on both sides, indulging its residents with marvellous views beyond and an incredible amount of natural light.

Excellent headroom, queen size bed and large shelving spaces leave no doubt about its generosity. Two wardrobes and several drawers ensure you will be dressed appropriately for any occasion. Beautiful mirrors, indirect LED lighting and a 32 inch screen for DVDs make this tasteful oasis complete.



Just like the owner's suite, your en-suite head and separate shower represent a highlight of their own. The bathroom is full of high-grade fittings such as an electric toilet, mixer tap and indirect lighting.

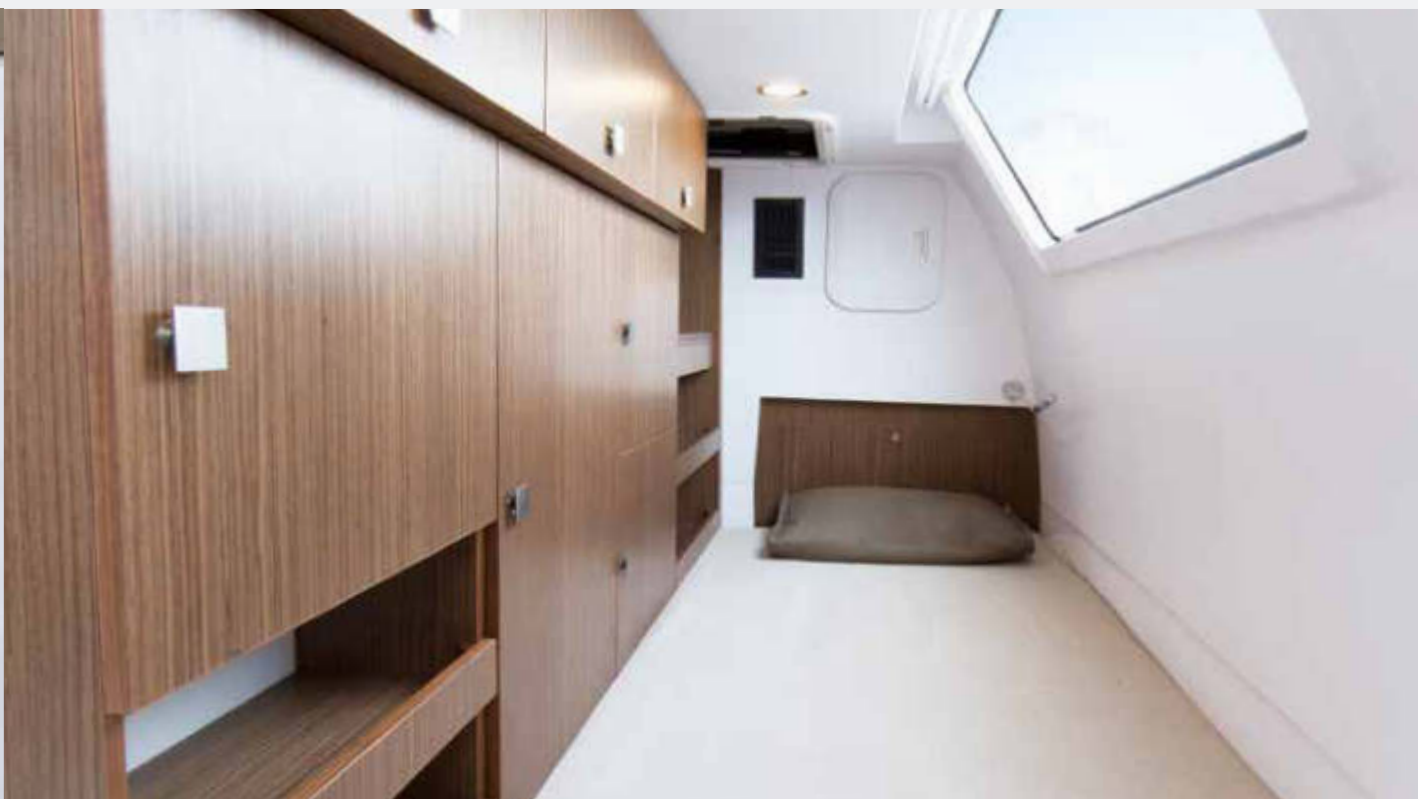
Passing the translucent door to the shower, a teak-laid shower seat and a handheld spray head adjustable in height. Above your head, a full-area rain shower is installed, beautifully framed by a rectangular strip light.





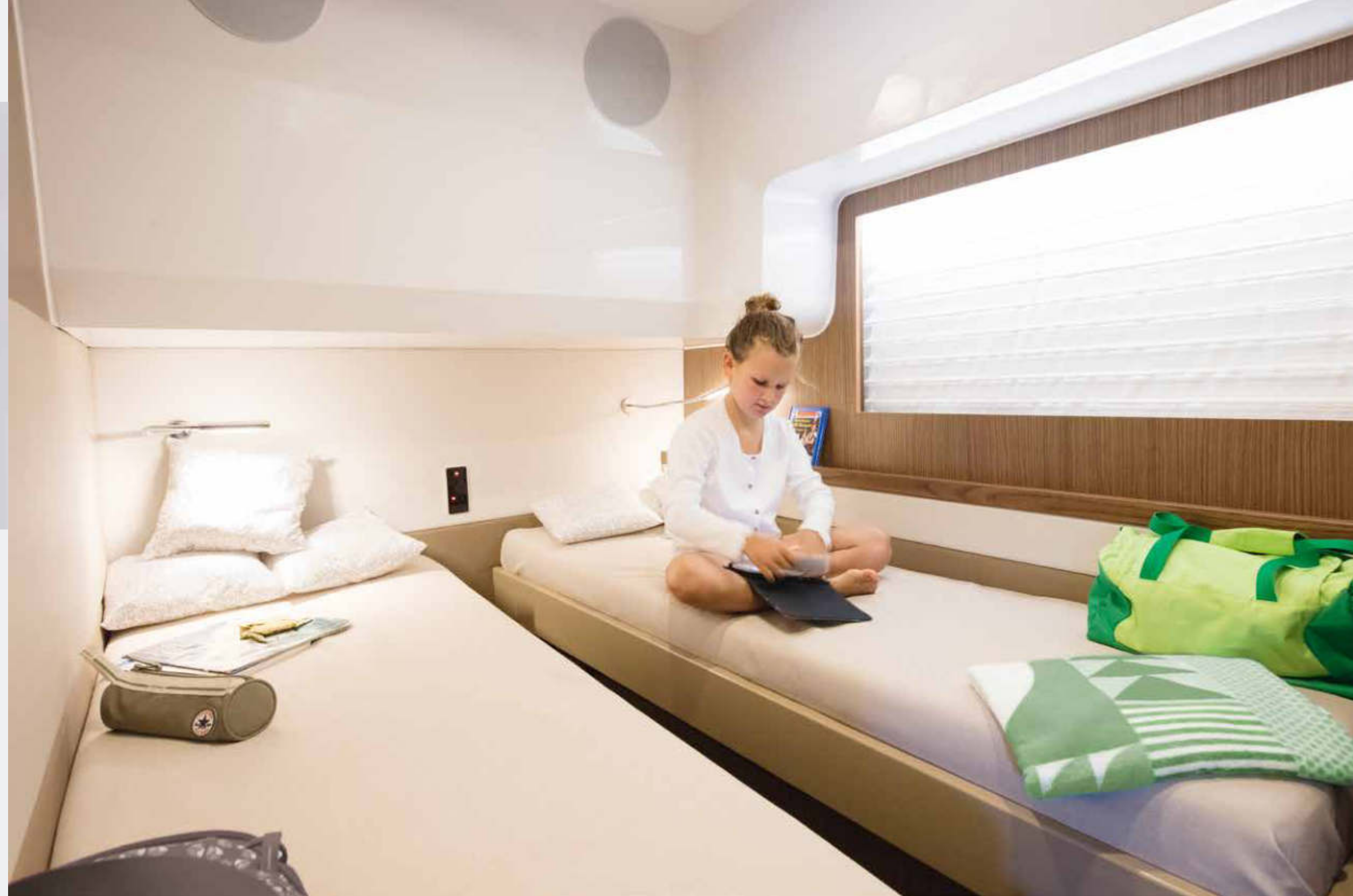
The bow section below deck truly deserves to be called "VIP cabin". Due to the wide bow shape, it is remarkably spacious. The brightness inside results from big hull windows and, in addition, from two skylights above – one fixed, one opening with blind.

The entire cabin is very exclusively furnished and decorated. Guests enjoy the comfort of getting separate access to the day head.



Having seen both owner's suite and VIP cabin, it is hard to believe this yacht features even more comfortable accommodation within a length of 53 feet. There is a third double cabin to the portside, also pleasing your guests with high headroom and generous bed sizes. According to Sealine's priority on daylight, this cabin is bathed in sunshine through its own hull window.

Finally, even a seventh bed can be provided if the utility room at the stern is being used as crew cabin. Otherwise, this space can host all kinds of storage for a long-term cruise.





For Sealine owners, driving is always a key part of the motor yachting experience. The power of two Volvo IPS600 makes sure you enjoy high speeds and instant acceleration whenever you feel like it. Of course, this impressive performance is accompanied by exceptional seakeeping, precise handling and high-class instruments. When onboard your F530, there is a time for relaxation – and a time to get goosebumps, too.



PRINCIPAL DIMENSIONS (according to ISO 8666)

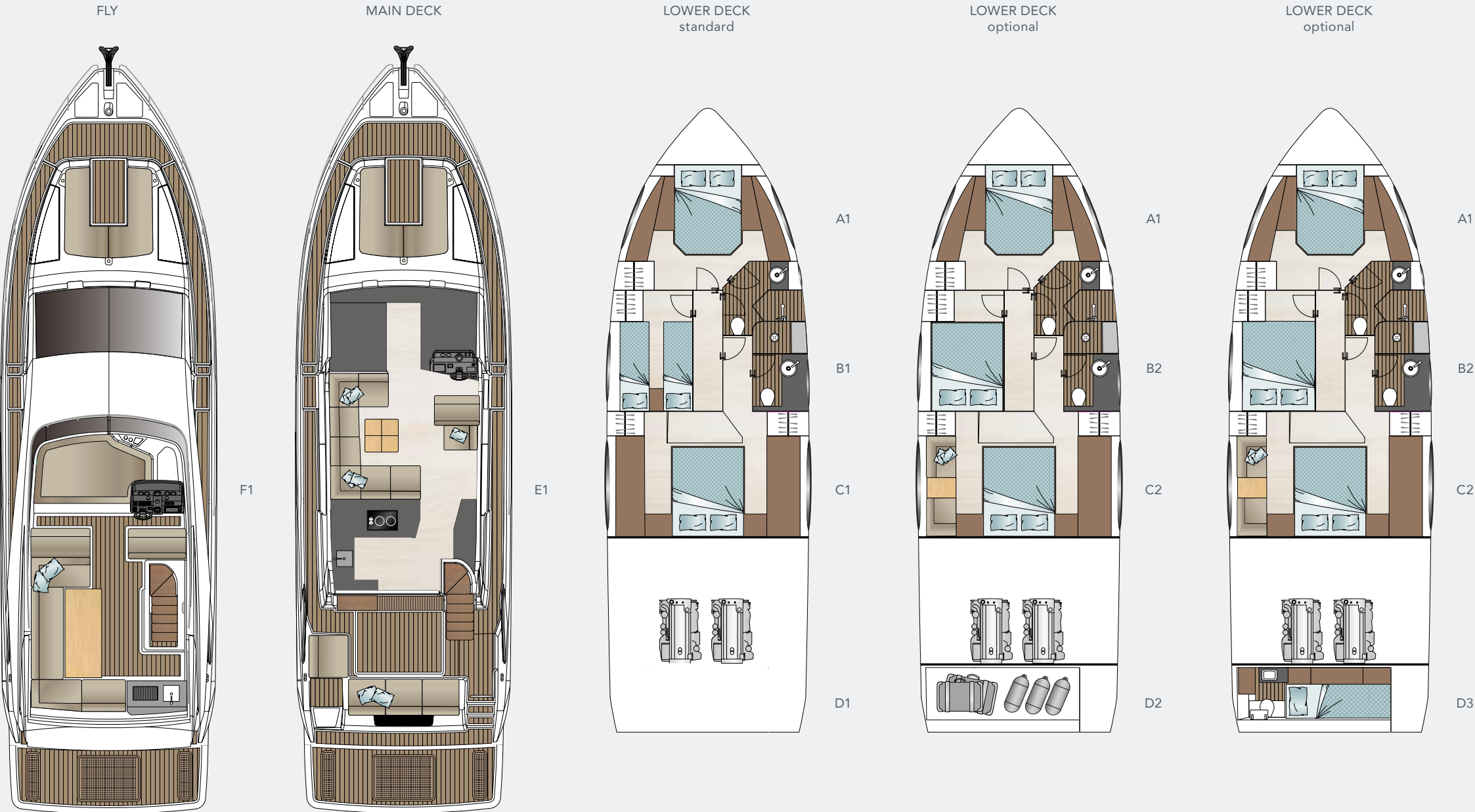
LOA	16.13 m	52' 11"
Beam	4.56 m	14' 11"
Draught	1.37 m	4' 6"
Height above waterline incl. mast	6.05 m	19' 8"
Height above waterline excl. mast	4.40 m	14' 4"
Fuel capacity	1,560 l	343 UK gal
Water capacity	766 l	168 UK gal
Displacement	19.94 t	19.63 UK t
Max people on board	12	
CE Category	B	

ENGINE STANDARD

2 x Volvo Penta IPS600 (435 HP), Pod Drive Propeller: TS6	26 knots*
--	-----------

ENGINE OPTIONAL

2 x Volvo Penta IPS700 (550 HP), Pod Drive Propeller: TBC	30 knots*
2 x Volvo Penta IPS800 (600 HP), Pod Drive Propeller: TBC	34 knots*

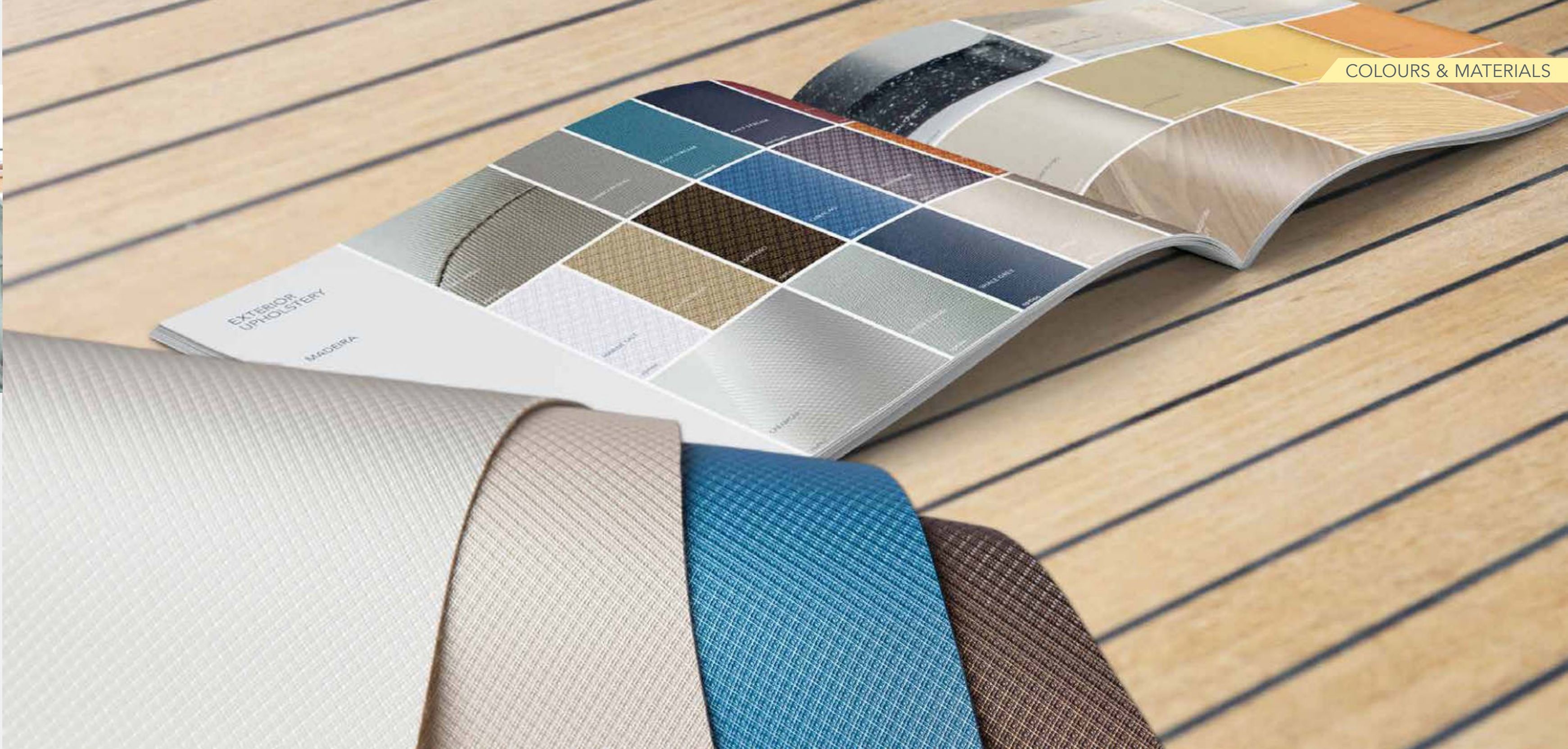


* All performance figures are given in good faith and are intended as an indication. These figures cannot be guaranteed as top speed in particular is affected by the cleanliness of the hull, conditions of the propellers, weight carried and air/sea temperature. Performance is related also to the optional accessories selected. SEALINE reserves the right to change specifications in line with the company policy of improvement through research and development. Errors and omissions expected. Please check with your dealer for a full list of inclusions.

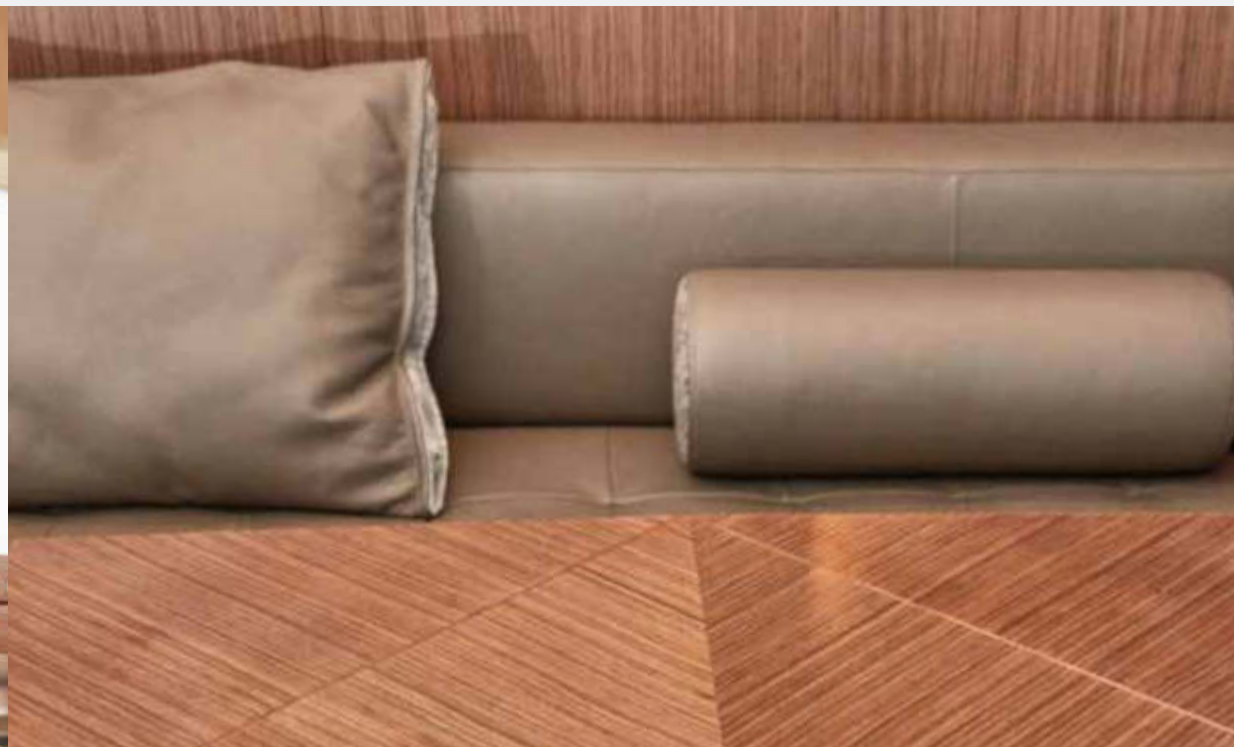


GREAT DESIGNERS CREATED YOUR F530. BE ONE OF THEM.

There are countless ways to kit out the interior of your boat. No matter what materials you choose: Quality will always be first-class. Carefully selected fabrics, exquisite floorings and a wide range of well-balanced colours create an ambience you'll enjoy anew each day.



COLOURS & MATERIALS



Our fabrics are made of natural materials that show attractive textures and beautiful woven patterns. The leathers are classy, extremely resilient and gentle to touch.

If you have individual requirements about the finishes, you are always welcome to challenge our craftsmen with your special requests. Measuring up to your unique taste is one of Sealine's greatest qualities.

Don't hesitate to create a look that is as individual as you are. The hull and the waterline of your F530 can be painted in almost every colour according to the Alexseal Yacht Coating Selection.

All worktops are made of CORIAN®. This premium surface combines high performance with outstanding aesthetics. It is best known for its seamless appearance and stunning effects of colour and translucency.

Furniture wood can be ordered in satin or high gloss finish on demand. The carpets of the cabins are woven of finest wool.





BRAND PHILOSOPHY



GERMAN PRECISION AND PASSION FOR THE SEA. THAT'S WHAT A SEALINE IS MADE OF.

In 2013, the Sealine brand found a worthy new home on the German Baltic coast. At our shipyard in Greifswald, we have perfected the interplay between state-of-the-art manufacturing techniques and skilled employees.

The outstanding people in our team perform their work with enormous experience, a deep understanding of the customer and great dedication.

In addition, we are thrilled to cooperate with our British partner Bill Dixon. Working closely with our in-house personnel, the award-winning designer is creating a new range of innovative Sealine models.

Above all, we believe that what holds true for the experienced boater, also holds true for us as boat builders. Beyond the individual skill, there is something which genuinely binds all of us at Sealine: A great passion for the sea.



DROP ANCHOR AT SEALINE

YOUR LOCAL SEALINE DEALER IS LOOKING FORWARD TO YOUR VISIT.



PANORAMIC VIEWS . EASY CRUISING
DAYLIGHT INSIDE . GENTLE BREEZE
HIDDEN COVES . SUNBATHE AT SEA
BUSTLING HARBOURS . FAMILY FUN
ALFRESCO DINING . STARS ABOVE

F530



www.sealine.com

Sealine Ladebower Chaussee 11 D-17493 Greifswald